

■ Model No. EP-30MS

Height : 454 mm
Weight : 14.2 kgs (w/o oil)

■ Specifications:

Max. Pressure : 700 bar
Oil Required : 3000 cc
2 way, 2 position manual valve
Drive unit : 220V/AC or 110V/AC · 50/60Hz

■ Oil Delivery:

2.6 L / min at low pressure
0.32 L / min at high pressure

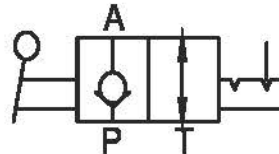
■ Features:

- With 5 meter remote control cable provides the user more convenient to operate advance by press "UP" bottom, on the property of manual control has to retract with manual lever as the "DOWN" bottom invalid functional.
- Two speed high performance.
- Pressure holds at 700 bar, ideal for maintenance and construction.
- Equipped with large-capacity one piece metal oil tank.

■ Accessories:

Hydraulic hose should be ordered separately.

■ Hydraulic Symbol Table



●Pressure Gauge



●Optional remote controller, shall order separately.



■ Model No. EP-30MD

Height : 454 mm
Weight : 14.1 kgs (w/o oil)

■ Specifications:

Max. Pressure : 700 bar
Oil Required : 3000 cc
4 way, 3 position manual valve
Drive unit : 220V/AC or 110V/AC ~ 50/60Hz

■ Oil Delivery:

2.6 L / min at low pressure
0.32 L / min at high pressure

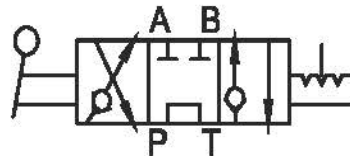
■ Features:

- With 5 meter remote control cable provides the user complete control to advance and retract.
- Two speed high performance.
- Pressure holds at 700 bar, ideal for maintenance and construction.
- Equipped with large-capacity one piece metal oil tank.

■ Accessories:

Hydraulic hose should be ordered separately.

■ Hydraulic Symbol Table



●Pressure Gauge



●Optional remote controller, shall order separately.



■ **Model No. EP-30S**

Height : 374 mm

Weight : 18.0 kgs (w/o oil)

■ **Specifications:**

Max. Pressure : 700 bar

Oil Required : 3000 cc

Input : Single phase 50/60Hz 110V 、 120V 、 220V 、 230V
350W motor

■ **Oil Delivery:**

2.6 L / min at low pressure

0.32 L / min at high pressure

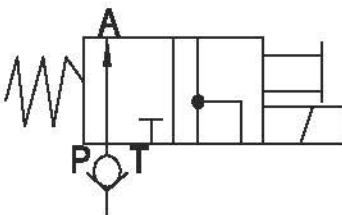
■ **Features:**

- Fully remote controlled, allows the operator to advance, hold or retract at any time.
- Two-stage pumping action.
- Cuts and crimps can be adjusted as necessary by stopping the advance or retract mode.
- 3/4 HP Heavy-Duty motor.
- Durable steel construction with built-in carrying handle.
- Low amperage requirement.
- Oil level is visible.

■ **Accessories:**

2M hydraulic hose attached

■ **Hydraulic Symbol Table**



● Optional remote controller, shall order separately.



■ Model No. EP-76MS

Height : 480 mm

Weight : 20.0 kgs (w/o oil)

■ Specifications:

Max. Pressure : 700 bar

Oil Required : 8000 cc

2 way, 2 position manual valve

Drive unit : 220V/AC or 100V/AC 50/60Hz · 1/2Hp

■ Oil Delivery:

3.9 L / min at low pressure

0.2 L / min at high pressure

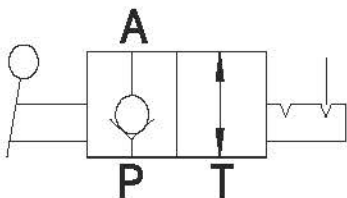
■ Features:

- With 5 meter remote control cable provides the user complete control to advance and retract.
- Two speed high performance.
- Equipped with single-phase, thermal protected induction motor to reduce noise level.
- Pressure holds at 700 bar, ideal for maintenance and construction.
- Equipped with large-capacity one piece metal oil tank.

■ Accessories:

Hydraulic hose should be ordered separately.

■ Hydraulic Symbol Table



•Optional remote controller, shall order separately.



■ **Model No. EP-76MD**

Height : 480 mm

Weight : 25.0 kgs (w/o oil)

■ **Specifications:**

Max. Pressure : 700 bar

Oil Required : 8000 cc

4 way, 3 position manual valve

Drive unit : 220V/AC or 110V/AC 50/60Hz ~ 1/2Hp

■ **Oil Delivery:**

3.9 L / min at low pressure

0.2 L / min at high pressure

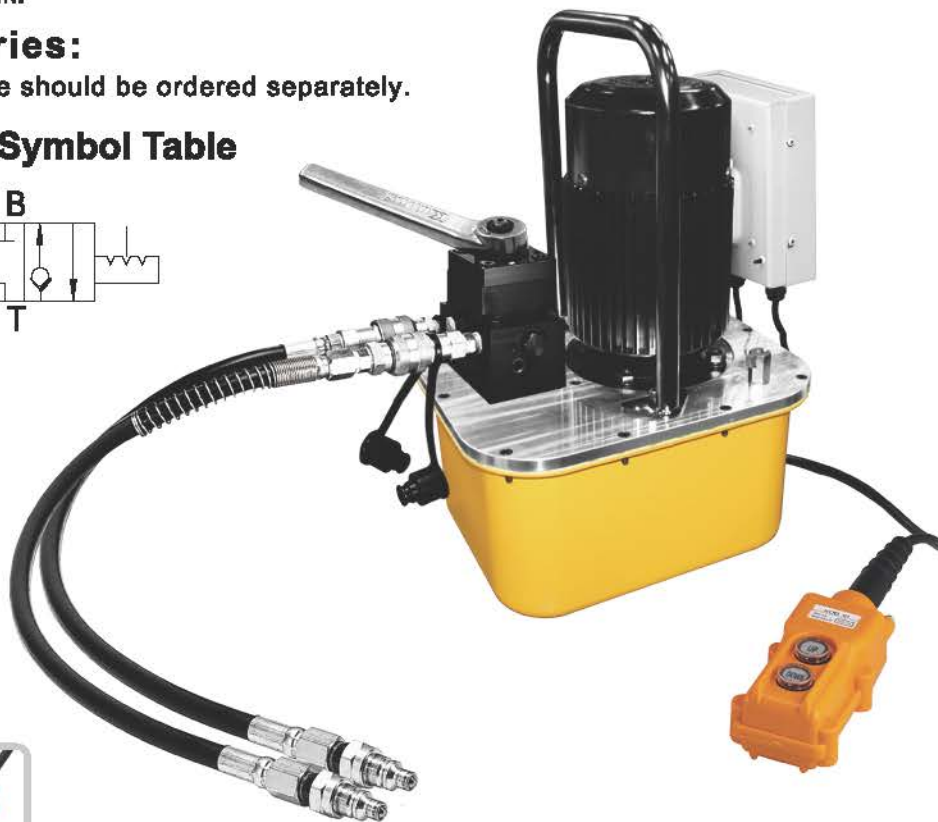
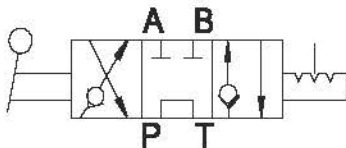
■ **Features:**

- With 5 meter remote control cable provides the user complete control to advance and retract.
- Two speed high performance.
- Equipped with a thermal protected induction motor to reduce noise level.
- Pressure holds at 700 bar, ideal for maintenance and construction.
- Equipped with large-capacity one piece metal oil tank.

■ **Accessories:**

Hydraulic hose should be ordered separately.

■ **Hydraulic Symbol Table**



● Optional remote controller, shall order separately.



■ Model No. EP-76SD

Height : 480 mm

Weight : 25.0 kgs (w/o oil)

■ Specifications:

Max. Pressure : 700 bar

Oil Required : 8000 cc

4 way, 3 position solenoid valve

Drive unit : 110V/AC or 240V/AC 50/60Hz ∨ 1/2Hp ∨ 3600 rpm

■ Oil Delivery:

3.9 L / min at low pressure

0.2 L / min at high pressure

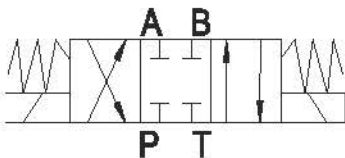
■ Features:

- With 5 meter remote control cable provides the user complete control to advance and retract.
- Two speed high performance.
- Equipped with a thermal protected induction motor to reduce noise level.
- Pressure holds at 700 bar, ideal for maintenance and construction.
- Equipped with large-capacity one piece metal oil tank.

■ Accessories:

Hydraulic hose should be ordered separately.

■ Hydraulic Symbol Table



• Optional remote controller, shall order separately.



■ **Model No. EP-76SS**

Height : 480 mm

Weight : 26.6 kgs (w/o oil)

■ **Specifications:**

Max. Pressure : 700 bar

Oil Required : 8000 cc

3 way, 2 position solenoid valve

Drive unit : 220VAC 100V~120V 、 210V~240V 、 50 / 60Hz 、 1/2Hp

■ **Oil Delivery:**

3.9 L / min at low pressure

0.2 L / min at high pressure

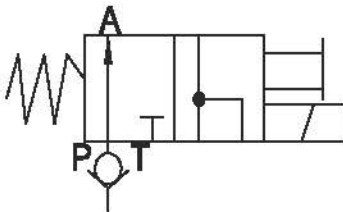
■ **Features:**

- With 5 meter remote control cable provides the user complete control to advance and retract.
- Two speed high performance.
- Equipped with single-phase, thermal protected induction motor to reduce noise level.
- Pressure holds at 700 bar, ideal for maintenance and construction.
- Equipped with large-capacity one piece metal oil tank.

■ **Accessories:**

Hydraulic hose should be ordered separately.

■ **Hydraulic Symbol Table**



●Optional remote controller, shall order separately.



■ Model No. EP-76SSC

Height : 480 mm
Weight : 25.2 kgs (w/o oil)

■ Specifications:

Max. Pressure : 700 bar
Oil Required : 8,000 cc
3 way, 2 position solenoid valve
Drive unit : 220VAC 100V~120V 、 210V~240V 、 50 / 60Hz 、 1/2Hp

■ Oil Delivery:

3.9 L / min at low pressure
0.2 L / min at high pressure

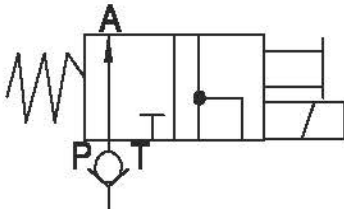
■ Features:

- With 5 meter remote control cable provides the user complete control to advance and retract.
- Two speed high performance.
- Equipped with single-phase, thermal protected induction motor to reduce noise level.
- Pressure holds at 700 bar, ideal for maintenance and construction.
- Equipped with large-capacity one piece metal oil tank

■ Accessories:

Hydraulic hose should be ordered separately.

■ Hydraulic Symbol Table



●Air-Cooled Heat Exchanger



●Pressure Gauge



●Pressure Adjuster



●Optional remote controller, shall order separately.

